

JALGABBRO ESD JIJI522



S2 FO SR
EN ISO 20345:2022
35 to 48



- Recycled microfiber upper
- PU/PU sole Biomass Balance de BASF®
- ESD / Dissipative
- Polymer toe cap type B and midsole no metallic



- Loafer safety shoe incorporating **MAXI-Soft Duo™ anti-fatigue technology** designed for work stations that require standing for long periods (Upright or sustained activity).
- Safety shoe protecting the electronic devices against electrostatic discharge phenomena. Electrostatic dissipative shoes ESD Environmental Class II tested according to **EN 61340-4-3** and **EN 61340-5-1**.
- Upper in **recycled microfibre (40% recycled polyamide)**. Black color.
- Upper lined in breathable **3D Surf mesh (66% recycled polyester)** with honeycomb structure to improve the peripheral ventilation of the foot, dries out rapidly.
- Padded ergonomic collar in compact flexible foam, lined for extra comfort and better ankle and Achilles tendon protection.
- Elasticated fastening for easy adjustment around the ankle joint.
- Perforated insole for enhanced comfort : **MAXI-Soft Duo™ Green** composed of a **soft Biomass Balance BASF® Dynamic PU** midsole with heat sensitive memory foam and a maximum size **Biomass Balance Elastopan insert** that improves weight distribution by reducing pressure points and absorbs and relieves body stress associated with a prolonged standing working position and when walking. Anatomical, breathable and fitted with the **Link ESD™ system**, an innovative multi-contact, static electricity dissipater (Patent pending).
- Ergonomic shoe, with broad synthetic polymer toe cap **Springtane-B™**. Impact resistance to 200 Joules. Minimum height after test $\geq 4\text{mm}$ in relation to the Type A toe cap in accordance with Standard 22568-2 : 2021.
- Inner sole in non-woven textile ESD.
- Heel stiffener to reinforce the heel seat.
- BASF® PU / PU sole BMB | BioMass Balance Certifié EU-REDcert²** with an urban sport design, linear profile and excellent slip resistance. Extremely light and flexible support base.



Slip resistance tests results EN Standard ISO 20345:2022

Test ground : Ceramic / NaLS (Sodium lauryl sulfate)

A- Heel to the front **0,38** ($\geq 0,31$)

B- Front to back **0,36** ($\geq 0,36$)

Additional requirement SR : Ceramic /Glycerin

C - Heel to the front **0,25** ($\geq 0,19$)

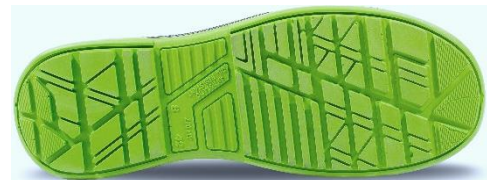
D- Front to back **0,24** ($\geq 0,22$)



**BMB
EU-REDcert²**

- 100% substitution of fossil resources with **renewable and sustainable** raw materials.
- Independently certified approach.
- Reduction of greenhouse gas emissions.
- Same properties and quality level as traditional safety shoes.

| | | | | |
|----------------|---|-----------------|-----------------|-----------------|
| Weight | Gross weight (42) : 1389 g / Net weight (42) : 1156 g | | | |
| Size | 35 to 39 | 40 to 42 | 43 to 45 | 46 to 48 |
| Packaging | 5 pairs | 10 pairs | | 5 pairs |
| Box shoes (mm) | 306 x 192 x 114 | | 340 x 210 x 133 | |
| Cartons (mm) | 590 x 210 x 320 | 590 x 410 x 320 | 685 x 423 x 347 | 695 x 227 x 366 |



www.jallatte.com